

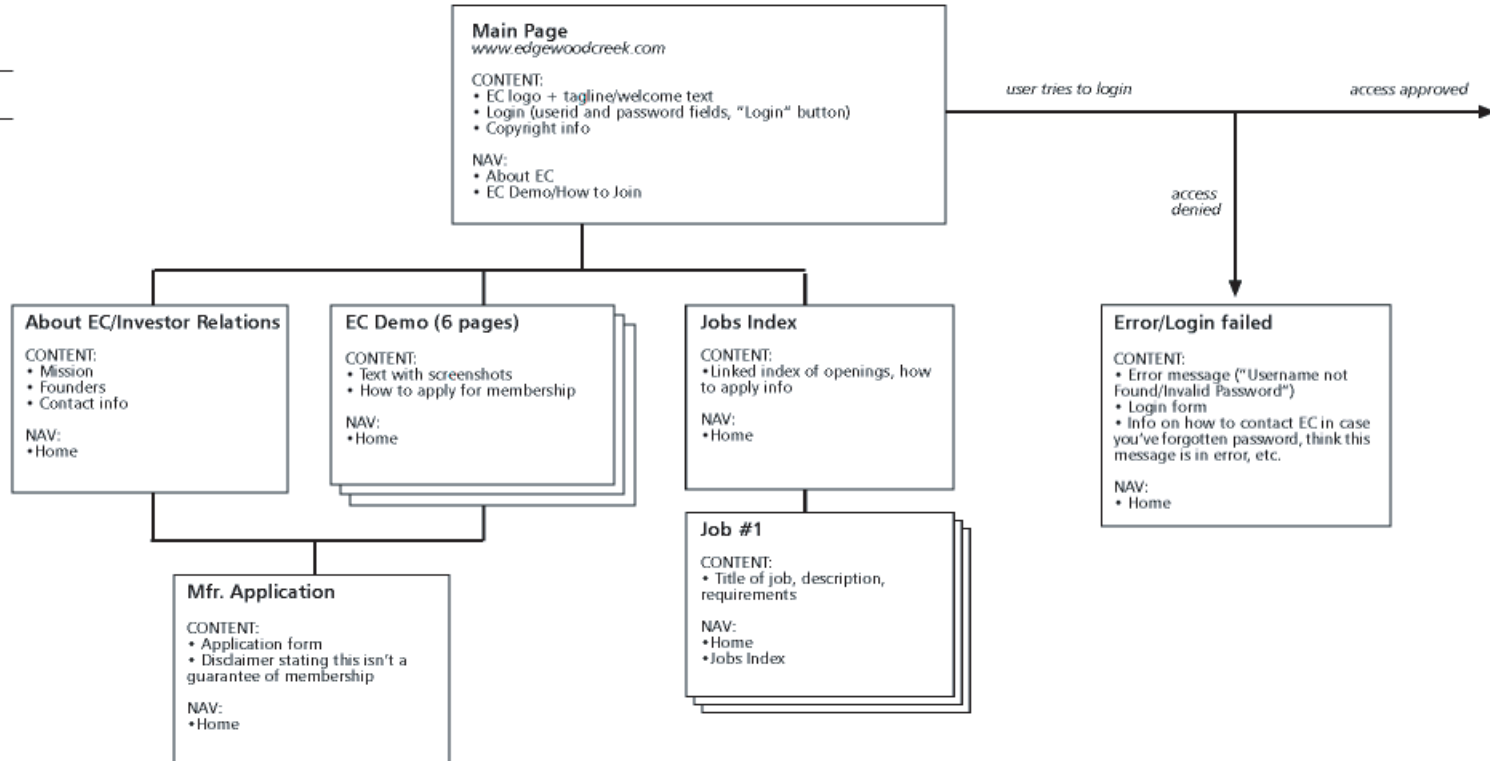
8.0 INFORMATION DESIGN FLOWCHART

Edgewood Creek Website

Flowchart v2.1dm — FINAL
May 5, 2000

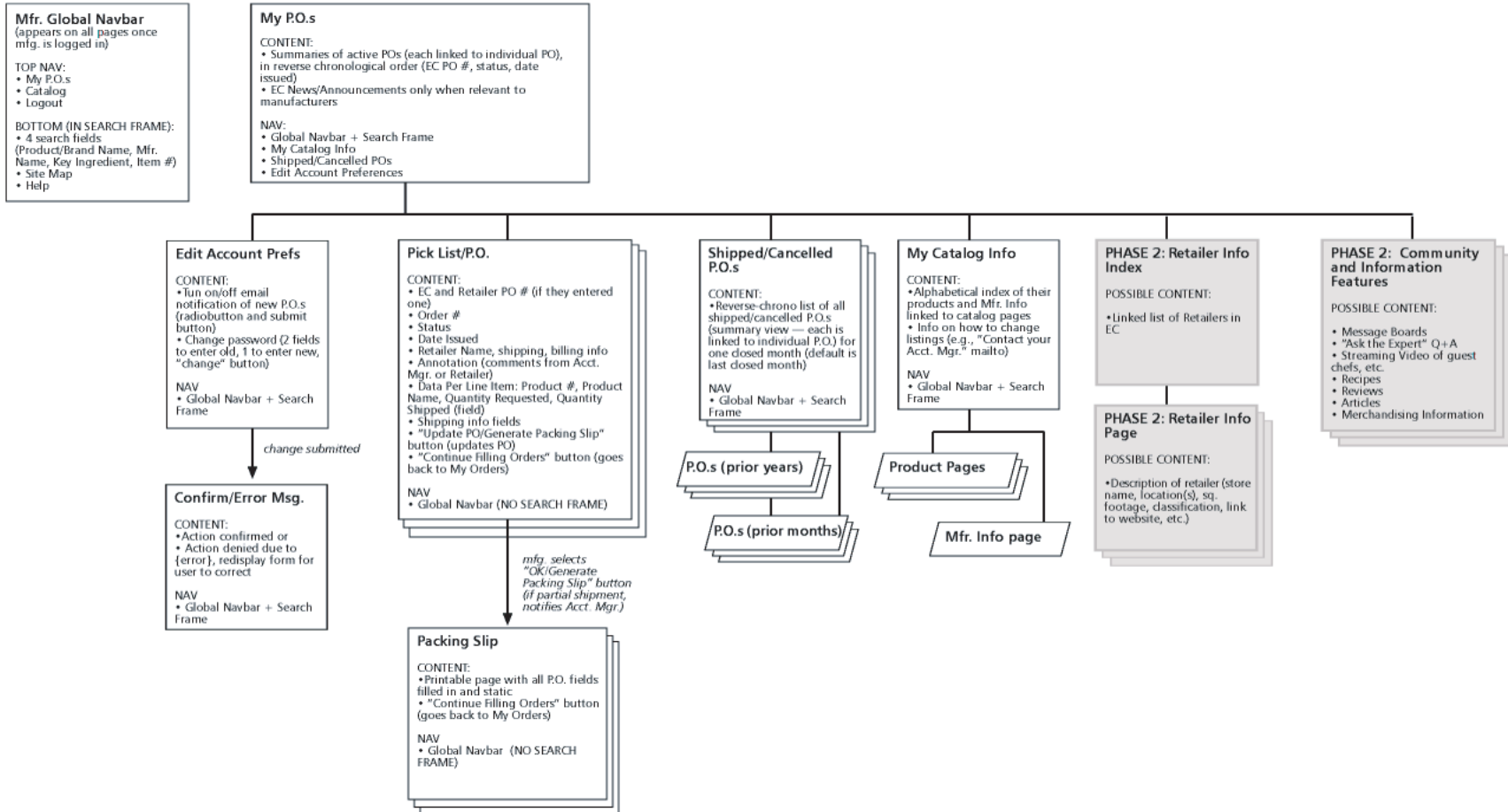
Client Signature _____

Modem Media Signature _____



8.1 INFORMATION DESIGN FLOWCHART

Mfr. login required to access these pages



8.2 INFORMATION DESIGN FLOWCHART

Retailer login required to access these pages

Retailer Global Navbar
(appears on all pages once retailer is logged in)

TOP NAV:
 • My Orders
 • Catalog
 • My Favorites
 • Checkout
 • Logout

BOTTOM (IN SEARCH FRAME):
 • 4 search fields (Product/Brand Name, Mfr. Name, Key Ingredient, Item #)
 • Site Map
 • Help

My Orders

CONTENT:
 • "Welcome \$user from \$retailer" text
 • Summaries of active orders (each linked to individual order) in reverse chronological order (Order #, status, date placed)
 • EC News/Announcements

NAV:
 • Global Navbar + Search Frame
 • Shipped/Cancelled Orders
 • Statements/Invoices
 • Edit Account Preferences

Edit Account Prefs

CONTENT:
 • Turn on/off email notification of new P.O.s (radiobutton and submit button)
 • Change password (2 fields to enter old, 1 to enter new, "change" button)

NAV:
 • Global Navbar + Search Frame

change submitted

Confirm/Error Msg.

CONTENT:
 • Action confirmed or
 • Action denied due to (error), redisplay form for user to correct

NAV:
 • Global Navbar + Search Frame

Order

CONTENT:
 • Order #
 • Overall Order Status
 • Date Placed
 • Annotation field (to send comments to mfg. about shipping/delivery, etc.)
 • Line items grouped by mfr. (mfr.'s listed alphabetically)
 • Data Per Line Item: Product #, Product Name, Product size/description?, Quantity Requested, Quantity Shipped, Status, Unit/case cost, total, Shipping/Tracking info, Annotations)
 • Change Order information ("Call your Acct. Mgr.")

NAV:
 • Global Navbar + Search Frame
 • Links to Next/Previous Order

See order placement workflow in Catalog section

Shipped/Cancelled Orders (Index)

CONTENT:
 • Reverse-chronological list of all shipped/cancelled P.O.s (summary view — each is linked to individual Order) for one closed month (default is last closed month)

NAV:
 • Global Navbar + Search Frame
 • Links to other months

Order

My Favorites

CONTENT:
 • Alphabetical index of favorite products w "Add to Order" (quick order) and "Add All" options; also linked to catalog pages
 • Instructions for how to add items to this page

NAV:
 • Global Navbar + Search Frame

Product Pages

Current Statement

CONTENT:
 • Summary view of statement for most recent (closed) month containing Orders that have shipped
 • "Detailed View" option
 • Links to invoices

NAV:
 • Global Navbar + Search Frame
 • Links to Historical Statements (reverse chrono order)

Statements (Historical)

CONTENT:
 • Same as Current Statement, only older
 • Links to invoices

NAV:
 • Global Navbar + Search Frame

Invoices

CONTENT:
 • Same as Current Statement

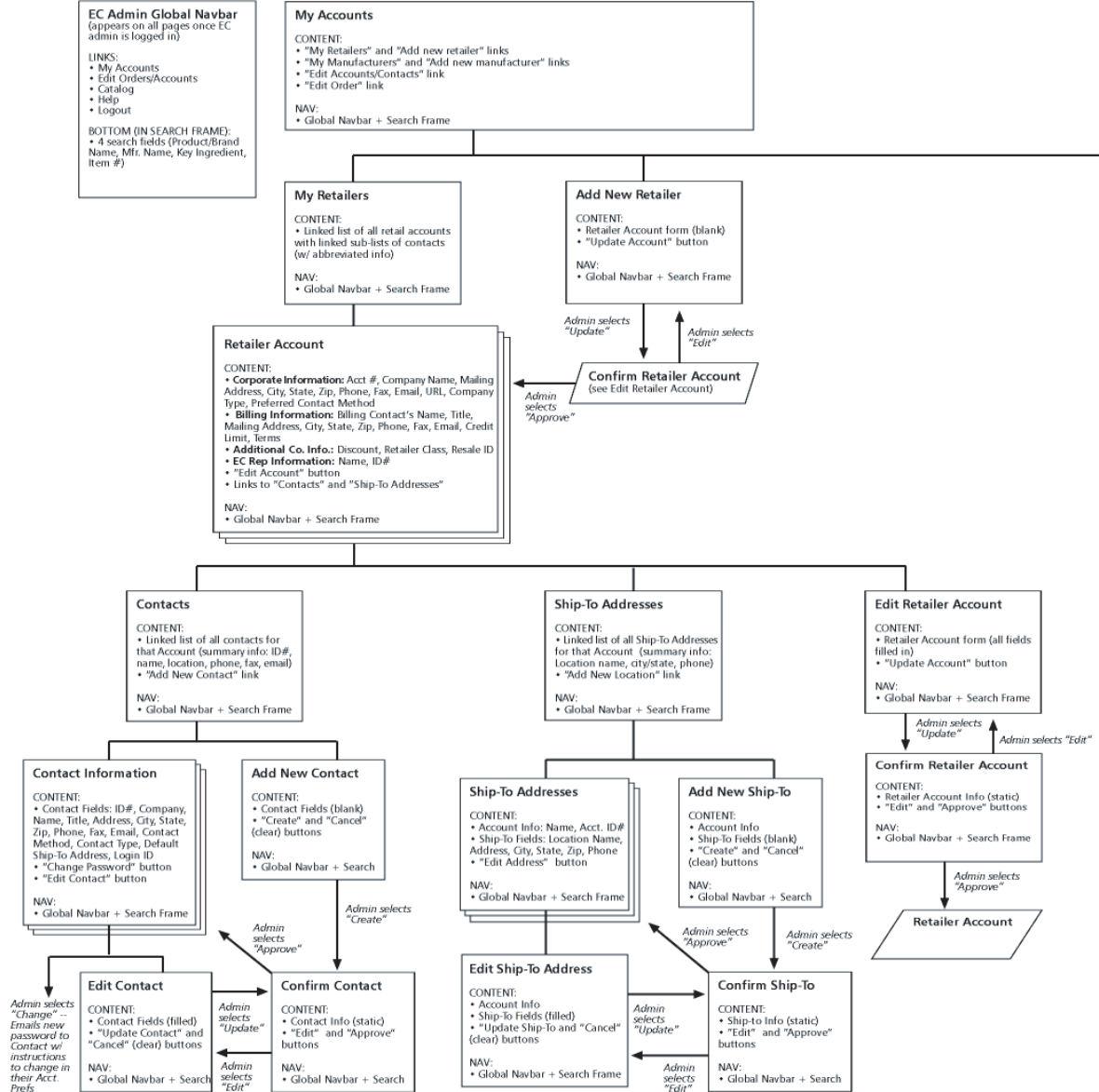
NAV:
 • Global Navbar + Search Frame
 • Previous/Next Statement

PHASE 2: Community and Information Features

POSSIBLE CONTENT:
 • Message Boards
 • "Ask the Expert" Q+A
 • Streaming Video of guest chefs, etc.
 • Recipes
 • Reviews
 • Articles
 • Merchandising Information

8.3 INFORMATION DESIGN FLOWCHART

EC Admin login required to access these pages



8.5 INFORMATION DESIGN FLOWCHART

Login required to access these pages -- accessible to all users
 (Mfg. don't see pricing info and can't place orders, however)

